

sixteen 25 ocean



Contemporary Oceanfront Living in Indialantic, Florida

ORAL REPRESENTATIONS CANNOT BE RELIED UPON AS CORRECTLY STATING REPRESENTATIONS OF THE DEVELOPER. FOR CORRECT REPRESENTATIONS, MAKE REFERENCE TO THIS BROCHURE AND TO THE DOCUMENTS REQUIRED BY SECTION 718.503, FLORIDA STATUTES, TO BE FURNISHED BY A DEVELOPER TO A BUYER OR LESSEE.





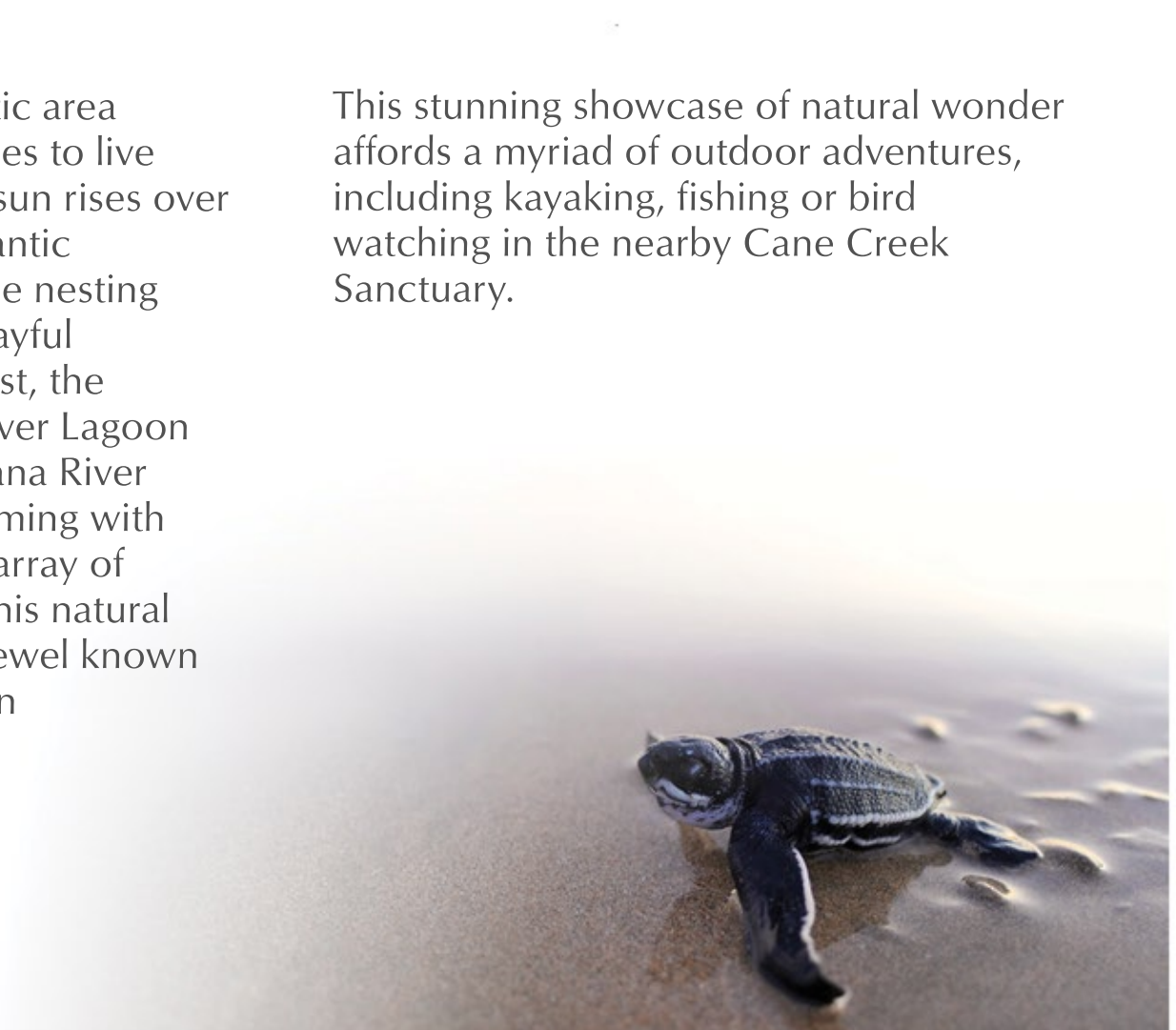
### Attractions & Entertainment

If entertainment is calling, you can drive just a few miles north to experience the fun and excitement of world-famous destinations, such as Ron Jon's Surf Shop and Kennedy Space Center. The condominium's proximity to Port Canaveral affords convenient access to the cruise capital of the world, with voyages embarking daily for ports-of-call throughout the greater Caribbean and even Europe. An unparalleled variety of theme park and entertainment venues are located just an hour away, as Indialantic's beaches are some of the closest to Orlando, Florida.

## Relaxed Island Setting

Little wonder why the Indialantic area is ranked among the top 3 places to live by AreaVibes. To the east, the sun rises over miles of pristine, surf-laden Atlantic beaches, home to rich sea turtle nesting areas, majestic pelicans and playful bottlenose dolphins. To the west, the tranquil waters of the Indian River Lagoon meets the south tip of the Banana River Aquatic Preserve, its banks teeming with fish, manatee and an amazing array of wading and migratory birds. This natural display of peacefulness is the jewel known by all of Indialantic's population of less than 10,000.

This stunning showcase of natural wonder affords a myriad of outdoor adventures, including kayaking, fishing or bird watching in the nearby Cane Creek Sanctuary.



## Luxurious, Carefree Beach Living



### Location & Convenience

This luxury oceanfront condominium community features only 12 exclusive residences, all ideally located on the lush barrier island of Indialantic, Florida. Residents are mere steps away from the sandy beaches and all the luxurious amenities of the community.

### Resort Architecture & Layout

- Every residence features a private elevator, foyer, and a secure, formal vestibule
- Distinctive Contemporary Architectural Style
- Manicured grounds with lush palms and native foliage creates a purely tropical atmosphere
- Secure ground floor garages are located under each building
- Two (2) garage parking spaces are assigned to each residence
- Ample guest parking is available within just a few steps of your residence
- Each ground floor garage features convenient, keyless access to a well-appointed elevator lobby

### Gourmet Kitchen & Wet Bar

- Custom hardwood cabinets feature elegant crown molding and fluted trimwork
- Custom fabricated granite or marble counters and backsplashes
- Under-mounted stainless steel basin or optional farmhouse sink complimented with high quality fixtures
- Smooth top range, wall-mounted convection oven, dishwasher and spacious refrigerator
- Beverage refrigerator installed in wet bar
- Large laundry room with full sized front loading washer and dryer and laundry basin
- Convenient access to private trash chute just outside of each residence's foyer
- \$2,500 credit toward sconce and pendant lighting
- Expansive ocean views from kitchen and kitchen island



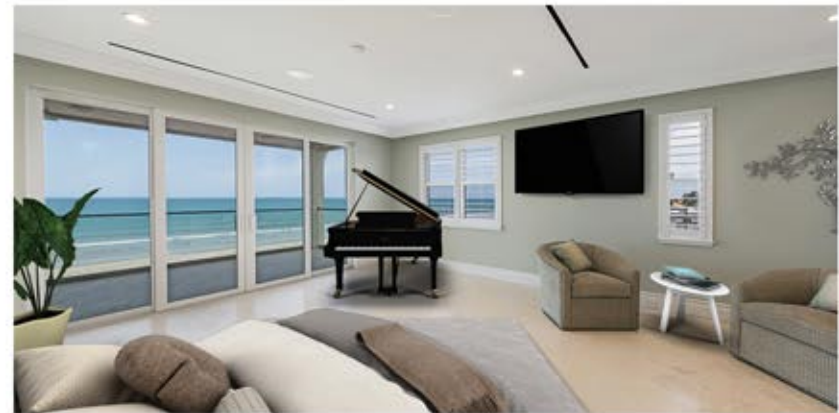
### Elegantly Appointed Baths

- Marble or granite counters with high quality fixtures and porcelain or stainless steel under-mounted basins
- Custom hardwood vanities with fully overlaid doors and full extension, soft-close drawers
- Large rainfall shower with frameless door adds a spacious feel to the already large master bath



## Residence Floor Plans & Finishes

- Spacious open floor plans and floor-to-ceiling sliders enhance the panoramic ocean views found in nearly every room
- Direct oceanfront lanai captures flawless sunrises over the simmering Atlantic Ocean
- River views capture sunsets from the West
- Your choice from our selection of flooring can be custom laid throughout the residence
- Solid core interior doors are finished with lever-style hardware and accessories
- Extensive architectural millwork includes large cove crown moulding and substantial baseboards
- Architectural tray ceilings and bronze railings create warmth throughout the residence
- Guest bedroom suites offer generous closet space, full private baths and balconies



- All rooms are pre-wired for digital cable, telephone and premium internet service
- All residences feature impact glass for safety and efficiency
- Modern, tankless water heaters are installed to add extra energy efficiency to each unit
- Nine foot ceilings create soaring interior space
- Outdoor sink and prep area make dining enjoyable on the oceanfront lanai



## Oceanside Infinity Pool

Enjoy the posh Florida lifestyle in our infinity edge lap pool and oceanfront sun deck. The modern, contemporary styling and sea breezes of this backyard oasis make you feel as if you are one with the ocean with the luxury conveniences of an oceanside resort. Sit back on a lounge or stroll through our lush tropical gardens on this well appointed and landscaped property.

## Exercise Pavilion

Maintain your healthy lifestyle and exercise regimen in our state-of-the-art fitness center with sauna and bathrooms, offering the latest elliptical and treadmill equipment for your cardiovascular workout, as well as machines and free weights for muscular endurance and strength training. While taking care of your body, enjoy commanding views of the Atlantic Ocean overlooking the infinity edge pool.



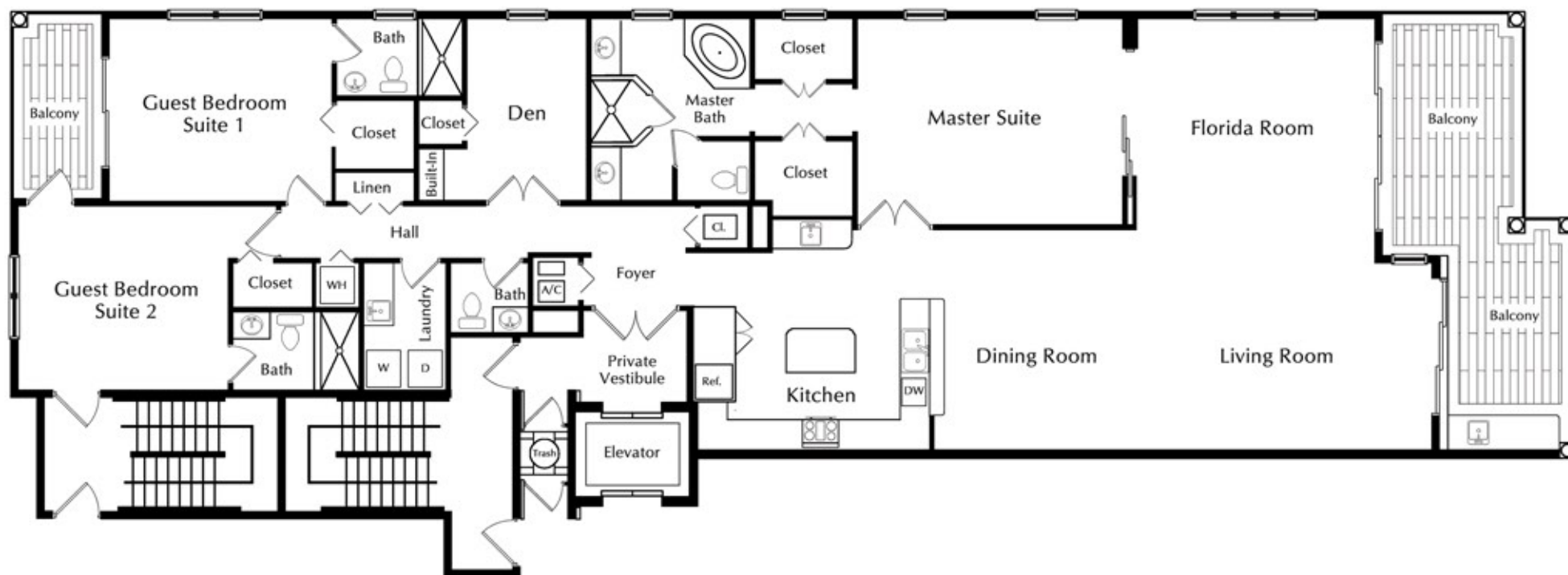




Living Area 2,820 sq. ft.  
Balconies 443 sq. ft.  
Total Area 3,263 sq. ft.

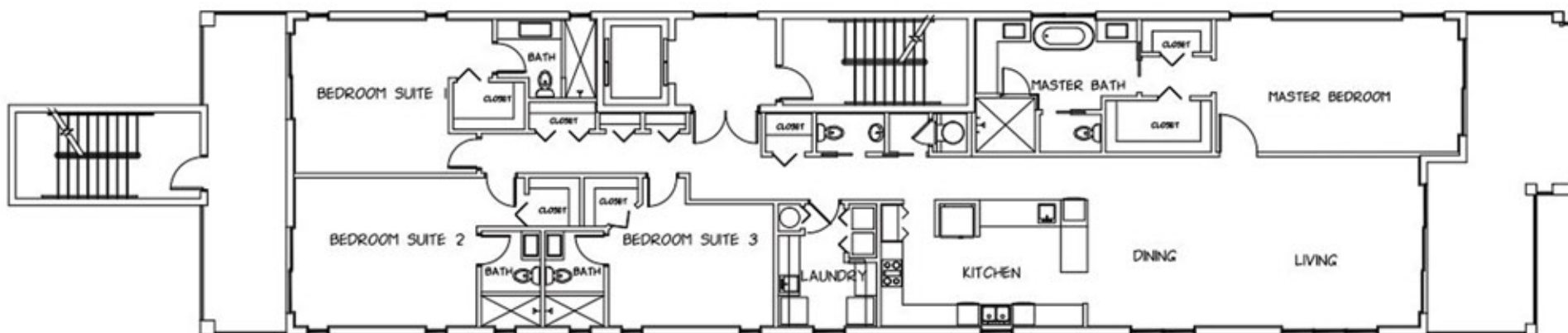


Living Area 2,820 sq. ft.  
Balconies 443 sq. ft.  
Total Area 3,263 sq. ft.





Living Area 2,820 sq. ft.  
Balconies 443 sq. ft.  
Total Area 3,263 sq. ft.





Developer reserves the right to modify floor plans, elevations, specifications, features and prices without notice. Square footage and room sizes are approximate. Exterior treatments, window locations and room configurations may vary with elevation. Some decorating treatments in and around the model homes may not be included in the list price and are for display purposes only. All renderings and floor plans are artistic conceptions and are not intended to be an actual depiction of the buildings, fencing, driveways or landscaping. Copyright 2016, Coastmark Construction.



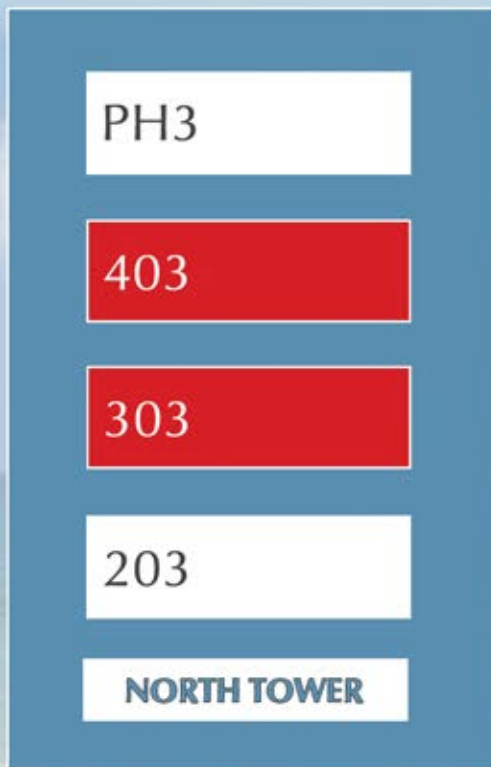


*Developer reserves the right to modify floor plans, elevations, specifications, features and prices without notice. Square footage and room sizes are approximate. Exterior treatments, window locations and room configurations may vary with elevation. Some decorating treatments in and around the model homes may not be included in the list price and are for display purposes only. All renderings and floor plans are artistic conceptions and are not intended to be an actual depiction of the buildings, fencing, driveways or landscaping. Copyright 2016, Coastmark Construction.*





*Developer reserves the right to modify floor plans, elevations, specifications, features and prices without notice. Square footage and room sizes are approximate. Exterior treatments, window locations and room configurations may vary with elevation. Some decorating treatments in and around the model homes may not be included in the list price and are for display purposes only. All renderings and floor plans are artistic conceptions and are not intended to be an actual depiction of the buildings, fencing, driveways or landscaping. Copyright 2016, Coastmark Construction.*



**AVAILABLE**



**SOLD**

*Developer reserves the right to modify floor plans, elevations, specifications, features and prices without notice. Square footage and room sizes are approximate. Exterior treatments, window locations and room configurations may vary with elevation. Some decorating treatments in and around the model homes may not be included in the list price and are for display purposes only. All renderings and floor plans are artistic conceptions and are not intended to be an actual depiction of the buildings, fencing, driveways or landscaping. Copyright 2016, Coastmark Construction.*

	Unit Number	Living Area	Balconies	Total	Bedrooms	Bathrooms	Price (Pre-Construction)
NORTH TOWER	PH 3	2,820	443	3,263	3	3.5	\$1,299,000
	403	2,820	443	3,263	3	3.5	BACKUP
	303	2,820	443	3,263	3	3.5	BACKUP
	203	2,820	443	3,263	3	3.5	\$1,044,900
	*Specifications and floor plans for North Tower units may vary.						
SOUTH TOWER	PH 1	2,820	443	3,263	3 + DEN	3.5	SOLD
	PH 2	2,820	443	3,263	4	4.5	SOLD
	401	2,820	443	3,263	3 + DEN	3.5	SOLD
	402	2,820	443	3,263	4	4.5	SOLD
	301	2,820	443	3,263	3 + DEN	3.5	SOLD
	302	2,820	443	3,263	4	4.5	\$1,144,900
	201	2,820	443	3,263	3 + DEN	3.5	SOLD
	202	2,820	443	3,263	4	3.5	SOLD

Developer reserves the right to modify floor plans, elevations, specifications, features and prices without notice. Square footage and room sizes are approximate. Exterior treatments, window locations and room configurations may vary with elevation. Some decorating treatments in and around the model homes may not be included in the list price and are for display purposes only. All renderings and floor plans are artistic conceptions and are not intended to be an actual depiction of the buildings, fencing, driveways or landscaping. Copyright 2016, Coastmark Construction.





**Garden by the Sea**  
South Cocoa Beach, Florida



**North Shore Club**  
Vero Beach, Florida



**Cocoa Cabanas**  
Cocoa Beach, Florida



**Ocean Cove**  
Cocoa Beach, Florida



**Ocean Paradise**  
Cocoa Beach, Florida



**Garden Bay Colony**  
Cocoa Beach, Florida